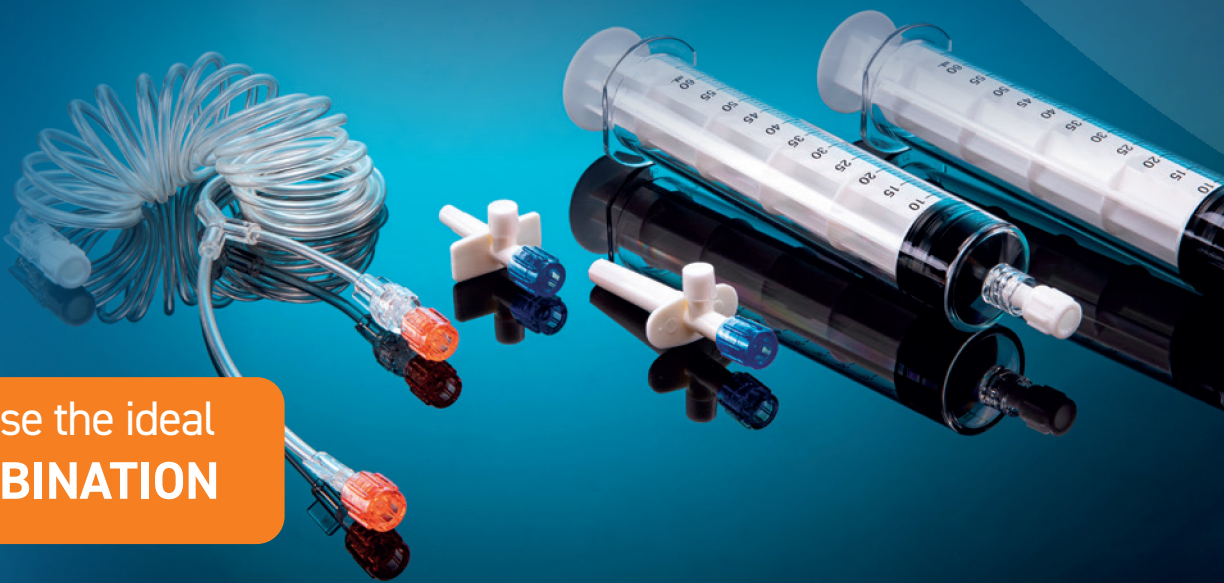


OptiStar® Elite Single-use
MRI injector & its
certified* consumables
for a reliable performance

Choose the ideal
COMBINATION

* Certified by Guerbet

The image displays various components of the OptiStar Elite MRI injector system. On the right, two large, clear plastic syringes with black barrels and white plungers are shown, each with a scale from 0 to 50. In the center, there are several white plastic connectors and blue-tipped syringes. On the left, a coiled clear plastic tube with a blue connector is visible. The items are arranged on a dark blue reflective surface against a lighter blue background.

Essential certified by Guerbet

Combining your **OptiStar® Elite** with **Guerbet consumables** ensures optimum performance.

Our priority is to support you by improving our consumables portfolio, thanks to a partnership with selected manufacturers to ensure high quality standards in your daily injection workflow.



All consumables are selected, tested and certified to meet the highest Guerbet quality standards. Legal manufacturers are ISO 13485** accredited and all consumables are CE marked and comply with the European Union regulatory requirements for Medical Devices*** or with the U.S. regulations or with local regulatory requirements when products are approved or registered.



* Certified by Guerbet as compatible on Guerbet injectors - data on file. ** Legal manufacturers Liebel-Flarsheim Company LLC and Shenzhen Boon Medical Supply Co., Ltd. are ISO 13485 certified. *** The EU Medical Device Directive (93/42/EEC, MDD) is a legislation which addresses essential principles for the safety and performance of medical devices during their lifecycle. The new EU Medical Devices Regulation ((EU) 2017/745, MDR) will repeal the existing MDD and bring significant regulatory changes.



Dual syringe kit

Dual MR Syringe with single check valve
Y-tubing and filling spikes

Single Use - 60mL - 230cm

Pressure limit: 300psi

REF #234158



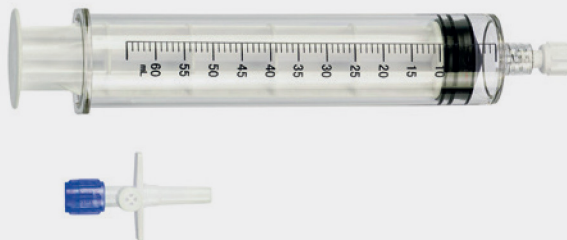
Single syringe kit

Single MR Syringe with filling spike

Single Use - 60mL

Pressure limit: 300psi

REF #234159

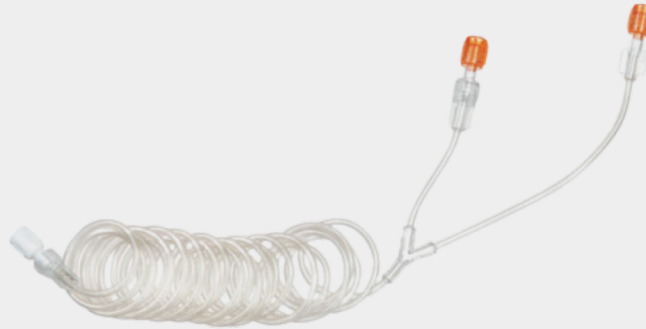


Y-tubing with Single check valve

Single Use - 230cm

Pressure limit: 350psi

REF #240005B



Y-Tubing with Single Check valve

Single Use - 150cm

Pressure limit: 200psi

REF #240002B



Reference number	Designation article	Quantity in box	Requested quantity	Comments
234158	Dual 60mL Syringe Kit + 230cm Y-tubing	50		
234159	Single 60mL Syringe Kit	50		
240005B	Y-tubing 230cm	100		
240002B	Y-tubing 150cm	100		

Driven by its commitment to advance radiology today and tomorrow, Guerbet Diagnostic Imaging has designed a portfolio of interconnected contrast imaging solutions to enhance your decision-making at each point of the patient journey from diagnosis, to treatment, to follow-up, so you can focus on what matters most, efficiently improving patient outcomes.

methapharm
Specialty Pharmaceuticals

Sales and Product Inquiries
Tel: 1-800-287-7686
Email: sales@methapharm.com

www.methapharm.com

Optistar Elite Contrast Delivery System is a medical device intended for use by qualified healthcare professionals. It is intended to inject MR contrast media and flushing solutions into a patient's vascular system to obtain diagnostic images when used in conjunction with Magnetic Resonance (MR) Imaging equipment. For complete information about precautions and optimal usage conditions, we recommend consulting the instruction for use supplied with the device or by your local Guerbet representative(s). For use only in countries with applicable health authority registrations Class IIb/CE TÜV SÜD 0123 Manufacturer: Liebel-Flarsheim Company LLC. EC Rep: Guerbet SA (Villepinte, France).

LF Injector Disposables are a medical devices intended for use by qualified healthcare professionals and designed to be used in the LF contrast injection systems. They contain the contrast and provide the delivery path for the contrast to the patient.

The injection systems are designed to inject contrast media into a patient's vascular system to obtain diagnostic images when used with computed tomography (CT), MR, Angiographic or x-ray equipment. For complete information about precautions and optimal usage conditions, we recommend consulting the instruction for use supplied with the device or by your local Guerbet representative(s). For use only in countries with applicable health authority registrations. Class IIa/CE TÜV SÜD 0123 Manufacturer: Liebel-Flarsheim Company LLC.

For complete information about precautions and optimal usage conditions, we recommend consulting the instruction for use supplied with the device or by your local Guerbet representative(s). For use only in countries with applicable health authority registrations.



*Scan here
to contact us*

Guerbet |